

BILLINGE CHAPEL END

— SCHOOL & NURSERY —

WEEKLY NEWSLETTER 25th November 2022

Website: www.chapelend.st-helens.sch.uk

Email: chapelend@sthelens.org.uk



Themed Weeks

At Chapel End Primary School we provide a broad curriculum offer. Part of this offer is for all of our children to learn about events from different religions, traditions, cultures and ways of life from around the globe.

Week Beginning

27.11.22

Advent Sunday

5.12.22

Christmas traditions

12.12.22

The Christmas Story

19.12.22

Hannukkah

Dates for your diary

2.12.22

Christmas Fair 3.30pm

8.12.22

Christmas Jumper day

& Tea with Santa 3.30pm

13.12.22

KS1 Nativity 2pm

15.12.22

EYFS Nativity 10.30am

19.12.22

EYFS & KS1 Christmas Party

20.12.22

KS2 Christmas Party

21.12.22

Christmas Carol Concert

1.15pm



Christmas Fair

Thank you for all the donations that we have received so far. As we have said before, without these the fair wouldn't happen. This year's Christmas Fair will take place next Friday 2nd December from 3:30pm.

Next Friday is a non-uniform day, in exchange for final donations of chocolate, wine, groceries and toiletries. Could you please bring any glass bottles to the School Office thank you. Many thanks in anticipation for your kind support.

Christmas Raffle

We hope that you will be able to support us with our Christmas Raffle. Tickets will be available to purchase at the fair but, for those of you who are unable to attend, you can purchase them by logging on to your SchoolMoney account. You can make a donation of any amount. A £1 donation will buy you one entry into the raffle, £5 will buy you 5 entries and so on. It's up to you how many times you enter but each entry will be recorded with your child's name. Prizes include £40 Houghwood voucher, signed Wigan Rugby League shirt, Bottle of Champagne, Christmas Hamper, Chocolates, Wine, Gift sets and a Book Token.

Tea with Santa

Unfortunately, Santa cannot make it to our Christmas Fair this year so we will be unable to open our Grotto. However, Santa has very kindly agreed to make it a Christmas to remember for all pupils at Chapel End by visiting us on Thursday 8th December at 3:15pm to have tea with the children. Tickets for this event are priced at £3.50 per pupil and will include hot food and a gift. Tickets are on sale on School Money. **Please note this is a pupil only event. Children will be taken from class to see Santa and parents should collect their children at 5.00pm.**

Christmas Bauble Competition

We are again holding our Christmas Bauble Competition and the baubles will be used to decorate our Christmas tree in the Junior hall. Polystyrene balls are available to purchase from the school office at a cost of £1.

Baubles can be decorated at home using any materials but please ensure they have a hook/loop to enable them to be hung on our Christmas tree. Baubles can be brought into school from Monday 28th November.

Santa will choose a winner on Thursday 8th December when he comes for tea. The designer of the winning bauble will be given a book token and a selection box.



Christmas Nativity

The dates and times for the performances are:

KS1 — Bethlehem's Buzzin! - Tuesday 13th December 2.00pm

EYFS — A Very Special Baby - Thursday 15th December 10.30am

All children in Nursery, Reception, Year 1 & Year 2 are involved. Tickets are on sale on SchoolMoney priced at £2 each.

Due to fire regulations, tickets are limited to 3 per child. SchoolMoney will show an amount of £6. If you want one ticket please just pay £2. If you want 2 tickets please just pay £4 by Friday 9th December, tickets will not be available after Friday 9th December.

Please note these performances will not be filmed.



Christmas Parties

This year's Christmas parties will be held on the dates below. **All children should come to school dressed in their party clothes.** At around 11am children will be provided with hot bacon/sausage/vegetarian sausage barmes and then will eat their party food at around 2pm.

If your child is on packed lunches they will not need to bring one on party day.

If your child is on school meals they will not need to pay for a school meal on party day. Dinner money for that week will therefore be £5.00.

Nursery, Reception,

Monday 19th December

Y1 & Y2 Christmas Party

Y3/4 Y5/6 Christmas Party Tuesday 20th December



Team Chocolate Orange Campaign 2022

Elliott Lamb (a relative of a current Y4 child) sadly passed away of a congenital condition at Christmas time in 2010. As part of his legacy the family try to collect as many chocolate oranges as possible to pass on as a small gift and gesture of kindness to those going through challenging times at Christmas and to our incredible NHS heroes, our carers and all of those who helped when lockdown came.

Thank you for all your donations so far. If you would like to donate a chocolate orange and haven't already done so, please send them into school by Friday 9th December.

For more information please contact chrislamb saint@gmail.com.

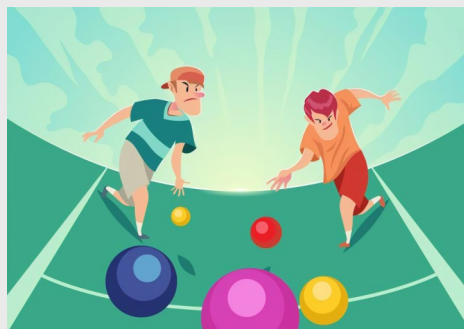
Year 6 World Cup Football Tournament



Well done to our World Cup Footballers.

Dylan, Eva, Joe, Evelyn, Ellis, Max, Olly and Luiza. You did us proud!!!!

Year 4 Boccia Tournament



Rufus, Archie, Amara, Louie, Victoria and Chloe represented our school brilliantly this week.

Important -Advanced Information!!

In line with the majority of schools across the borough, we now finish early on the final day of each **term** (end of half terms will be normal times). Please note on Wednesday 21st December school finishes at the following times:

1.50pm Nursery, Reception,

2.00pm Years 1, 2, 3, 4, 5 and 6

Please ensure you are at school in plenty of time to pick up your child promptly.

NB: The last After School Club of the term will be Tuesday 20th December.

Children in Need

Thank you for all your donations in aid of the Children in Need Appeal.

A fantastic amount of **£194.00** was raised.

Autumn Leaves

As we move further into the Autumn months, the nights are drawing in and the leaves are starting to fall, we would like to remind everybody to take extra care when walking on our paths around the school grounds, although every effort is made to keep them clear, with the nature of the setting and being surrounded by trees it isn't always possible and as a result the paths can be quite slippery.

Volunteers

A number of classes in school need volunteers to help with reading. If you are able to spare a morning or afternoon, or even an hour to help in school, we would be extremely grateful. Please inform Mrs Trivass when you would be able to help and if you have a preference for a particular age group. Thank you for your support.

E Safety

I would like to direct all parents and carers to the E Safety section of our school website. Information about how to add parental controls to your child's digital devices along with many more useful tips can be found on there.



Pupil of the Week

Wonder Wall

Nursery	Mia Platt	Robyn Manley
Reception	Emilia Stein	Esme Pennington
Y1	Esmae Gough	Irteza Aman
Y2	Daisy O'Brien	Joel McLean
Y3	Mason Cartwright	Annabel Underhill
Y4	Victoria Malowicz	Corey Davies
Y5	Isaac Watson	Millie Wood
Y6	Faye Jackman	Lucas Berry

Y6 Residential - 29th to 31st March 2023

Reminder that the cost of the holiday will need to be paid in full on SchoolMoney by Friday 13th January 2023.

Spending money of 6 x £1 coins (in an envelope please) can be handed to the school office any time from now until March.

We will be arranging a meeting before the February holidays in 2023 where we will give out necessary paperwork and provide you with information such as a kit list etc. You will also be able to ask any questions you may have and discuss, if necessary, any special needs.

School Diary — Next Week in School

Monday 28th November

Guitar Lessons

Chapel End Rocks 12-1pm

Drumming 3:15-4:15

Year 1 & 2 Dodgeball 3.15-4.15 (4of 5)

Tuesday 29th November

Year 3 & 4 Dodgeball 3.15-4.15 (4of 5)

Wednesday 30th November

String Lessons

Brass Lessons

Chapel End Rocks 12-1pm

Toddler Group 9:30-11:00am

Drumming 3:15-4:15

Dance 3.15-4.00pm

Thursday 1st December

Choir 12pm

Friday 2nd December

Year 6 swimming 1.00-2.00 (5 of 7)

Christmas Fair 3.30pm



Term Dates for 2022-2023

	Opens on	Closes on
Autumn Term 2022	Mon 5 Sept	Thurs 20 Oct
Autumn Term 2022	Mon 31 Oct	Wed 21 Dec
Spring Term 2023	Wed 4 Jan	Thurs 9 Feb
Spring Term 2023	Mon 20 Feb	Fri 31 March
Summer Term 2023	Mon 17 April	Thurs 25 May
Summer Term 2023	Mon 5 June	Wed 19 July

School also closed:
May Day—Monday 1st May 2023

Term Dates for 2023-2024

	Opens on	Closes on
Autumn Term 2023	Wed 6 Sept	Fri 27 Oct
Autumn Term 2023	Tues 7 Nov	Thurs 21 Dec
Spring Term 2024	Mon 8 Jan	Fri 9 Feb
Spring Term 2024	Mon 19 Feb	Thurs 28 March
Summer Term 2024	Mon 15 April	Thurs 23 May
Summer Term 2024	Mon 3 June	Tues 23 July

School also closed:
May Day—Monday 6th May 2024

Change of Meal Arrangements

If you would like to change your child's meal arrangements after Christmas, please email school at chapelend@sthelens.org.uk by **Friday 16th December**.

Fish Friday Payments

Please remember Fish Friday is paid **in advance of the term**. Fish Friday for next half term is **£12.50 (5 weeks)**.

School Swimming Lessons

We are very pleased to be able to offer all children in Years 5 & 6 the opportunity to visit the swimming baths once a week over half a term period to participate in swimming lessons. Lessons will take place on a Friday afternoon between 1:00pm and 2:00pm.

The dates for each year group are as follows:

Year 6

4th November 22
11th November 22
18th November 22
25th November 22
2nd December 22
9th December 22
16th December 22

Year 5

24th February 23
3rd March 23
10th March 23
17th March 23
24th March 23
31st March 23

The swimming lessons will take place at Queens Park Health & Fitness Centre and transport will be arranged by school.

Below are the swimwear requirements set by the local authority.

'Pupils should be encouraged to wear swimming caps during the lessons or hair must be tied back. Correct swimwear must be worn at all times.

Girls must wear a one-piece swimsuit (no two piece at all). No Wet Suits.

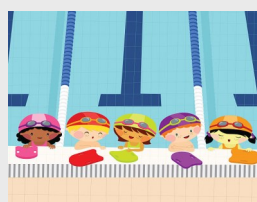
Boys must wear swimming trunks or shorts of no longer than mid thigh length with no pockets (no Bermudas or long shorts are acceptable as these can become dangerous when the pockets become full of water). No Wet Suits.

No Jewellery to be worn including all types of earrings.

Any child attending the pool without the correct equipment will not be allowed to swim.'

Any armbands/floats etc will be provided.

A letter has recently been sent out to parents of Year 6 containing more details and a letter to parents of Year 5 children will be sent out nearer the time.





BILLINGE CHAPEL END

— SCHOOL & NURSERY —

Carr Mill Road, Billinge, Wigan, WN5 7TX

Telephone: 01744 678230 Email: chapelend@sthelens.org.uk

Date: 11/11/22

Headteacher: Mr C. Hewitt



Dear Parents/Carers,

On Wednesday 7th December, our Smart School Council has organised a Santa Dash Fun Run. All children can wear Christmas themed clothes on that day, for example Santa hats, antlers, Christmas jumpers etc. Children should wear training shoes and bring a named water bottle on the day.

We will be asking children to bring a donation in to support the work of local food banks—our Council members will deliver all collected items to the Trussell Trust in St Helens.

We will be asking classes to bring in specific items—please see the table below. Items can be brought into school from the week beginning Monday 5th December.

EYFS	Tinned foods
Y1	Tinned desserts, jams, marmalades etc.
Y2	Pasta/rice, dried food
Y3	Powdered milk, tea, coffee etc
Y4	Baby food, formula, wipes, nappies etc
Y5	Toiletries, toilet roll etc
Y6	Snacks, biscuits etc. Please ensure these have a long date.

Thank you for your continued support

Chapel End Smart School Council

'Kindness is a gift that we all can afford to give.'

I do my best!





When
i'm
bigger,
i've got
big plans!



i want to go to
college and study to be a **zoologist**
to get my dream job



in a zoo!

i'm **Grace** and i need a foster family
to help me achieve my dreams.

01744 671199 stheLens.gov.uk/fostering



ST HELENS
BOROUGH COUNCIL