

BILLINGE CHAPEL END

— SCHOOL & NURSERY —



WEEKLY NEWSLETTER

25th February 2022

Website: www.chapelend.st-helens.sch.uk

Email: chapelend@sthelens.org.uk

Tel: 01744 678230



Themed Weeks

At Chapel End Primary School we provide a broad curriculum offer. Part of this offer is for all of our children to learn about events from different religions, traditions, cultures and ways of life from around the globe.

Week Beg 28th Feb

Tell a Fairy Tale

Week Beg 7th March

Careers Week

Week Beg 14th March

Neurodiversity Celebration

Week Beg 21st March

World Poetry Day (21st)

Week Beg 28th March

World Theatre Day



COVID Restrictions in school

Dear Parents

Following the government's announcements on the changes to isolation, I have had a few parents asking about the advice for children coming to school with Covid symptoms. We have received the advice below and will follow this until we are told to change.

Should parents send their child to school if they think they have COVID-19?

If a child has any of the main symptoms or a positive test result, the public health advice remains unchanged and is to stay at home and avoid contact with other people.

Anyone with any of the main COVID-19 symptoms should order a test, and is advised to stay at home while waiting for the result.

If children test positive, they are advised to follow public health advice.

Adults and children who test positive will continue to be advised to stay at home and avoid contact with other people for at least 5 full days and then continue to follow the guidance until they have received 2 negative test results on consecutive days.

If anyone needs support obtaining a test, please ring the school office for advice.

I know it is a little frustrating and at times seems a little contradictory and confusing, but if we work together, I'm sure we will get through the next few months and keep everyone safe and school as 'normal' as possible for our children.

Mr Hewitt

Y6 Booster Classes - Maths & English

In preparation for the Year 6 children's SATS in May, booster classes have now commenced. There are 5 remaining sessions up until Easter then a further 3 sessions after Easter, please see remaining dates below.

Booster classes are on Thursdays 3.15-4.30pm and will cover Maths and English. Children are invited to bring an additional snack and drink to have at 3.15pm before their class begins.

Thursday 3rd March

Thursday 10th March

Thursday 17th March

Thursday 24th March

Thursday 31st March

After the Easter holidays, the sessions will be on the following dates:

Thursday 21st April

Thursday 28th April

Thursday 5th May

Y4 Football

Luca, Nicole, Isaac, Mason, Joe, Izaac and Rose represented us scoring some great goals!!



Nursery & Infant Easter Bonnet Parade



It is traditional at Chapel End to hold an 'Easter Bonnet Parade' for all Nursery and Infant children. This will take place on Friday 1st April and we very much hope that all children will participate.

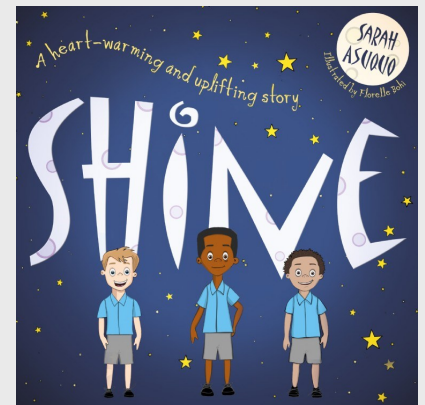
We hope that, with your help, your child will make a simple Easter or Spring hat to bring to school on that day. Small prizes will be given to the 'best' ones in each class. Hopefully the weather will be fine and the children will be able to go home wearing their decorated hat. Please speak with your child's teacher if you require any further information.

World Book Day

We are celebrating World Book Day in school next **Thursday 3rd March**. We are basing the theme of the day on the book 'Shine' by Sarah Asuquo. This is a heart-warming story which promotes the message that we can all be whomever we want to be.

We are asking the children to dress up in clothing that represents themselves in some way. The day will be based on inclusivity and will celebrate the fact that each one of us is unique.

Today your child will bring home a £1 National Book Token—this can be used towards purchasing a new book or swap the token for a FREE book. For further details please find more information on the reverse of the book token.



Comic Relief Friday 18th March



Together at Chapel End Primary School this year we are joining the Red Nose Day campaign.

Children are invited to tell a 'child friendly joke' via Dojo on or before **Friday 18th March**. Each class will then have a 'jokeathon' session on the 18th. Class teachers will also be organising activities for each year group on the day, as well as posting their own joke!

It would be brilliant if each child could wear something red, however if they do not have anything in their wardrobe of this colour it is fine to wear other colours.

We would ask for a voluntary donation of your choice towards 'Red Nose Day' and this can be paid via SchoolMoney. Please note that plastic-free noses are now available from local supermarkets, which impact less on our environment.

Thank you in advance for your support.

PTFA Spring Term Events

Mother's Day Gift Shop

With Mother's Day approaching we have decided to give the children at Chapel End the opportunity to purchase a small gift for the special people in their lives. These gifts will be toiletries-based and will be presented in a gift bag with a tag that the children can write themselves. All gifts will be £2.50. In order to avoid too many children shopping at once and to give the children the opportunity to save their pocket money we will be providing specific shopping days for each school bubble on the following dates:

Y5 and Y6—Wednesday 16th March

Y3 and Y4—Thursday 17th March

Foundation Stage, Y1 and Y2—Friday 18th March.



Mother's Day this year is on Sunday 27th March.

Easter Chocolate Fun

Next **Friday 4th March** we will be holding a non-uniform day. The children will be able to attend school in their own clothes in return for a donation of a small Easter Egg or a chocolate bar.

These donations will then be used as prizes for our Grand Chocolate Raffle and our class-based Easter Bingo. Both of these events are scheduled to take place on the last day of the Spring Term (**Friday 1st April**).

More details on the above events will be provided closer to the time.



School Meals

School meals cost £12.50 per week and are paid each Monday in advance.

Fish Friday (packed lunches Monday-Thursday and a school meal on a Friday) are also paid in advance for the term (£15.00 this term, 6 weeks).

NB: Please remember that meal arrangements apply for a half term and pupils may only change after a holiday period.

Free School Meals

We appreciate that with the ongoing corona virus your household income may have declined.

If you feel that you would now qualify for Free School Meals as a result of a fall in household income then you may apply to St Helens Council, Education Benefits using the online application form available through St Helens Council website under Free School Meals.

The application process will require you to provide evidence of proof of income and benefits such as Universal Credit which you can upload directly to the website.

REMINDER: Young Voices Re-arranged New Date !!!!

As you are aware the Young Voices concert scheduled for February was postponed to Spring/Summer 2022.



Young Voices will now take place on **Wednesday 25th May**.

All Choir members brought home a letter yesterday about the concert. Please can all reply slips be returned to the school office on Monday. Thank you.



**Event: Adventures in Wonderland,
Croxteth Park**

Sunday 10th April 11am-3pm

For more information please pick up a leaflet from the school's main reception.



Reminder: Chapel End has linked up with St Helens Foodbank and we are now a 'voucher school'. Families in need of support can collect vouchers discretely from our school office, which they can then use at one of the many foodbanks located around the borough. Please visit <https://sthelens.foodbank.org.uk/> for more information.

Spring Song—Please note date change!

As part of our Music Curriculum our children in each year group learn a song from a different genre of music. On Thursday 31st March each class will perform their song to the rest of the school on the junior playground. To make this event come alive we would like the children to dress in a style that represents the genre of music that they are :

Dance

EYFS— Pop

Y1—Reggae

Y2—Rock

Y3—Soul & Funk

Y4—Dance

Y5—Country

Y6—Rap

Country

Soul + funk

Rap

Reggae

Pop

Important -Advanced Information

In line with the majority of schools across the borough, we now finish early on the final day of each **term** (end of half terms will be normal times). **Please note on Friday 1st April school finishes at the following times:**are at school

1.50pm **Nursery, Reception, Y5 and Y6**

2.00pm **Y1, Y2, Y3 and Y4**

If you have children that finish at different times, please collect them together at the later time.

Please ensure you are at school in plenty of time to pick up your child promptly.

NB: The last After School Club of the term will be Thursday 31st March.



Chapel End Toddler Group

Every Thursday during school term time
9:30am-11:00am

First session Thursday 10th March

Chapel End Primary School

Carr Mill Road

Billinge

WN5 7TX

£2 per session with hot drinks, biscuits and toast
provided.

We welcome you to join us for fun-filled, play,
singing and learning activity sessions in a warm
and friendly environment.





St Helens Foodbank are asking for your donations to enable them to provide three days of emergency food to local people in crisis. Working with local care professionals to identify those in need, they are able to provide short term relief and support as well as signposting people to organisations able to help them longer term.

Please help them to feed the hungry by donating some of the following non-perishable food items.

LOGLIFE ORANGE JUICE/CORDIAL

UHT MILK

INSTANT COFFEE - 100 GRAM JARS

CEREAL

TINNED FRUIT

TINNED TOMATOES

TINNED FRUIT

TINNED RICE PUDDING/CUSTARD

TINNED POTATOES/INSTANT MASH

TINNED FISH

SUGAR (500gm)

JARS OF PASTA/CURRY SAUCE

PKT SAVOURY RICE

PKT PASTA IN SAUCE

PKT SUPER NOODLES

BISCUITS

SNACKS (CHOCOLATE BISCUITS/CRISPS)

JAM

TOILET ROLLS

TOILETRIES i.e. shower gel; shampoo; toothpaste; deodorant; toothbrushes; soap

PET FOOD

Items can be sent into school any day next week and will be collected by the Foodbank next Friday 4th March.

THANK YOU FOR YOUR ANTICIPATED SUPPORT!



FREE CARING FOR CHILDREN COURSE

Do you want to work or volunteer with children?

Maybe you are a parent or support a family with young children?

ACL have the course for you!

Our **FREE** working with children workshop will introduce the course and opportunities available, followed by a **FREE** 12-week Level 1 Caring for children course which covers:

- How children learn
- How different activities play an important role in development
- Developing knowledge and understanding of learning experiences
- Understanding learning and development through play



Quotes from previous learners

"The whole course has been informative and presented in an easy way to understand"

"I now have a better understanding of how activities done in a learning environment help children develop"

"I've learnt a lot of activities for young children through play"

"I now have a better understanding of early years when it comes to sitting in governor meetings, which is what I wanted"

Contact ACL on the numbers below for more information.

Contact us to find out more:

Call: 01744 676671 / 01744 677328 or text 07702 959814

Visit: www.sthelens.gov.uk/adultlearning

Email: adultlearning@sthelens.gov.uk

Facebook: **StHelensACL**

Twitter: **STHLearning**





Congratulations to the following children who were praised this week. Children who are attending school from each class have their work placed on Mr Hewitt's Wonder Wall to celebrate their achievements.

Pupil of the Week

Wonder Wall

Nursery	Emilia Stein	Sophia-Rose Comiskey
Reception	Lilly Haworth	Matilda Campbell
Y1	Olivia Hawkes-Scott	Harlow Smith
Y2	Megan Pilling	Barnaby Aspinall
Y3	Corey Davies	Daniel Partington
Y4	Tilly Burrows	Luca Hanna
Y5	Mia Roberts	Milla Mullarkey
Y6	Zac Boylan-McCann	Scarlett Middlehurst

BAG 2 SCHOOL

Bag 2 School is a company that specialises in the reuse and recycling of good quality second-hand clothing and we have arranged for them to make a collection from Chapel End. All the bags will be weighed and we will be paid for the total weight collected. When the clothes have been removed from the bag the plastic will be packed and sent for recycling.

Remember, the more we collect the greater the benefit to our school.

PLEASE USE YOUR OWN BAGS (THERE IS NO LIMIT)

We are collecting good quality items for RE-USE:

Men's, ladies' & children's clothing, paired shoes, handbags, belts & accessories.

(No uniforms, workwear, pillows, duvets or pieces of fabric please)

Please return your Bag2School on:

Friday 18th March 2022

NB: please do not send bags into school until the morning of 18th March as we have no facility in school to store them.



School Diary

Monday 28th February

Y6 Swimming

Drumming Lessons 3.15-4.15pm

Y1/Y2 Dodgeball 3.15-4.15pm (1 of 5)

Tuesday 1st March

NO Guitar Lesson today.

Choir—12 noon

Y5 & 6 Football Training 3.15-4.00pm

Y3/Y4 Football 3.15-4.15pm (1 of 5)

Wednesday 2nd March

Schools Music Service Brass Lessons

Y4, 5 & 6 St Helens Music Service Strings Lessons

Y3/4 Judo—Lunchtime (1 of 5)

Year 4, 5 & 6 Netball 3.15-4.00pm

Drumming Lessons 3.15-4.15pm

Thursday 3rd March

World Book Day—children to dress to represent themselves in some way

Y6 Booster Class

Friday 4th March

Non Uniform Day in return for chocolate towards Easter activities/bingo

Rock Steady Music—PM



Term Dates for 2021-2022

	Opens on	Closes on
Autumn Term 2021	Mon 6 Sept	Fri 22 Oct
Autumn Term 2021	Mon 1 Nov	Wed 22 Dec
Spring Term 2022	Thurs 6 Jan	Fri 11 Feb
Spring Term 2022	Mon 21 Feb	Fri 1 April
Summer Term 2022	Tues 19 April	Thurs 26 May
Summer Term 2022	Tues 7 June	Wed 20 July

School also closed:
May Day—Monday 2nd May 2022

Term Dates for 2022-2023

	Opens on	Closes on
Autumn Term 2022	Mon 5 Sept	Thurs 20 Oct
Autumn Term 2022	Mon 31 Oct	Wed 21 Dec
Spring Term 2023	Wed 4 Jan	Thurs 9 Feb
Spring Term 2023	Mon 20 Feb	Fri 31 March
Summer Term 2023	Mon 17 April	Thurs 25 May
Summer Term 2023	Mon 5 June	Wed 19 July

School also closed:
May Day—Monday 1st May 2023