



# BILLINGE CHAPEL END



— SCHOOL & NURSERY —

WEEKLY NEWSLETTER 8th December 2023

Website: [www.chapelend.st-helens.sch.uk](http://www.chapelend.st-helens.sch.uk)

Email: [chapelend@sthelens.org.uk](mailto:chapelend@sthelens.org.uk)

Telephone: 01744 678230

## Themed Weeks

At Chapel End Primary School we provide a broad curriculum offer. Part of this offer is for all of our children to learn about events from different religions, traditions, cultures and ways of life from around the globe.

## Week Beginning

11.12.23  
The Christmas Story

## Dates for your diary

12.12.23  
KS1 Nativity 1.30pm

13.12.23 & 14.12.23  
EYFS Nativity 10.30am

14.12.23  
Tea with Santa

15.12.23  
Christmas Dinner

18.12.23  
Year 5 & 6 Christmas Party

19.12.23  
EYFS & KS1 Christmas Party

20.12.23  
Year 3 & 4 Christmas Party

21.12.23-KS2  
Morning Carol service 8.30am

21.12.23  
School closes at 2pm

8.01.24  
School re-opens

## A Big Thank You!!!

Thank you to all our families that very kindly donated goods for a local food bank. You really have made a difference. Well done to our school council for organising this scheme.

You can see some of the amazing work being done by Storehouse Projects at <https://www.storehouseproject.org/>





### Christmas Fair

Thank you for all the donations that we have received. As we have said before, without these the fair wouldn't happen. The Christmas Fair will take place today from 3:30pm.

### Christmas Raffle

We hope that you will be able to support us with our Christmas Raffle. Tickets will be available to purchase at the fair but, for those of you who are unable to attend, you can purchase them by logging on to your SchoolMoney account. You can make a donation of any amount. A £1 donation will buy you one entry into the raffle, £5 will buy you 5 entries and so on. It's up to you how many times you enter but each entry will be recorded with your child's name. Prizes include a Christmas Hamper, Wigan Athletic Football Tickets, Alcohol, Chocolate and Days Out vouchers.

### Tea with Santa

Unfortunately, Santa cannot make it to our Christmas Fair this year so we will be unable to open our Grotto. However, Santa has very kindly agreed to make it a Christmas to remember for all pupils at Chapel End by visiting us on Thursday 14th December at 3:15pm to have tea with the children. Tickets for this event are priced at £3.50 per pupil and will include hot food and a gift. Tickets are on sale on School Money. **Please note this is a pupil only event. Children will be taken from class to see Santa and parents should collect their child at 5.00pm.**



### Christmas Shopping!

Thank you to everyone who has taken the time to register with Easyfundraising. This really is money for nothing especially if we all use the app when doing our Christmas shopping. The concept is very simple, you need to download the Easy Fundraising app and then nominate Billinge Chapel End PTFA as your chosen cause. After that for any shopping you do through the app a donation will be given to the PTFA.

Many thanks for your anticipated support and Happy Christmas Shopping!

Mrs Grimshaw



### Christmas Bauble Competition



We are again holding our Christmas Bauble Competition and the baubles will be used to decorate our Christmas tree in the Junior hall. Polystyrene balls are available to purchase from the school office at a cost of £1.

Baubles can be decorated at home using any materials but please ensure they have a hook/loop to enable them to be hung on our Christmas tree. Baubles can now be brought into school.

Santa will choose a winner on Thursday 14th December when he comes for tea. The designer of the winning bauble will receive a small prize.

## Parent and Carer Consultation

Dear Parents and Carers. As you are aware, Billinge Chapel End Primary School has applied to become part of the Everyone Matters Schools Trust. As part of this application process, we are consulting with parents and carers.

On Monday 11th December at 5:30pm, myself and Mr Young, Principal of Rainford High School, will be hosting a consultation meeting in the school hall.

The aim of this meeting is to answer questions raised through our digital survey and any other questions that Parents and Carers may have regarding our application.

We look forward to seeing you there.

Mr Hewitt

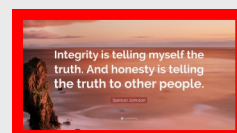


Please note the dates for the remaining Year 5 swimming lessons:

14th December 2023



Our school value for this half term is 'HONESTY'.



### Instrumental Lessons

Please find below the dates of final instrumental lessons for this year and new start dates for 2024.

<u>Instrument</u>	<u>Last Lesson</u>	<u>Starts Again</u>
Guitar/ Keyboard	12.12.23	9.01.24
Strings	20.12.23	10.01.24
Drums	14.12.23	11.01.24



### Christmas Nativity



All children in Nursery, Reception, Year 1 & Year 2 are involved.

The dates and times of the performances are:

KS1 — A Happy Clappy Nativity - Tuesday 12th December 1.30pm

Tickets are free of charge. Your child has brought home 2 tickets for the performance on 12th December. Due to fire regulations, tickets are limited to 2 per child.

EYFS — Wiggly Nativity - Wednesday 13th December 10.30am & Thursday 14th December 10.30am.

(Please note change of time)

Due to fire regulations, tickets are limited to 2 per child.

Please note these performances will not be filmed.

### Christmas Parties

This year's Christmas parties will be held on the dates below. **All children should come to school dressed in their party clothes.** At around 11am children will be provided with a hot barm and then will eat their party food at around 2pm.

If your child is on packed lunches they will not need to bring one on party day.

If your child is on school meals they will not need to pay for a school meal on party day.

Dinner money for that week will therefore be £7.80



Y5 & Y6 Christmas Party      Monday 18th December

EYFS & KS1 Christmas Party      Tuesday 19th December

Y3 & Y4 Christmas Party      Wednesday 20th December

### Team Chocolate Orange Campaign 2023

Elliott Lamb (a relative of a current Y5 child) sadly passed away of a congenital condition at Christmas time in 2010. As part of his legacy the family try to collect as many chocolate oranges as possible to pass on as a small gift and gesture of kindness to those going through challenging times at Christmas and to our incredible NHS heroes, our carers and all of those who helped when lockdown came.

If you would like to donate a chocolate orange please send them into school by Wednesday 13th December.

For more information please contact [chrislamb saint@gmail.com](mailto:chrislamb saint@gmail.com).



### Important -Advanced Information!!

In line with the majority of schools across the borough, we now finish early on the final day of each **term** (end of half terms will be normal times). Please note on Thursday 21st December school finishes at the following times:

**1.50pm    Nursery, Reception,**

**2.00pm    Years 1, 2, 3, 4, 5 and 6**

**Please ensure you are at school in plenty of time to pick up your child promptly.**

**NB: The last After School Club of the term will be Wednesday 20th December.**



### Pupil of the Week

### Wonder Wall

**Nursery**

**Miles Barlow**

**Penny Bavis**

**Reception**

**Olivia Mellor**

**Mia Platt**

**Y1**

**Cynthia Ujj**

**Lyla Barker**

**Y2**

**Jessica Gaskell**

**Seb Colquitt**

**Y3**

**Amias Aslam-Gallagher**

**Alfie Armstrong**

**Y4**

**Megan Pilling**

**Jack Lyon**

**Y5**

**Everyone!!!**

**George Norton**

**Y6**

**Miley Hunter**

**Megan Roberts**

### Class Attendance for w/c 27th November

<u>Class</u>	<u>% attendance for week</u>
Nursery	96.2
Reception	95.7
Year One	96.0
Year Two	92.2
Year Three	98.3
Year Four	92.1
Year Five	94.4
Year Six	89.1

WOW! Well done to Nursery, Years 1 and 3 for hitting our 96% attendance target!!!

### Volunteers

A number of classes in school need volunteers to help with reading. If you are able to spare a morning or afternoon, or even an hour to help in school, we would be extremely grateful. Please inform Mrs Montrose when you would be able to help and if you have a preference for a particular age group.





## School Diary — Next Week in School

### Monday 11th December

Reception, Y1 & Y2 Dodgeball (5 of 5) 3.15-4.15pm

### Tuesday 12th December

Keyboard lessons (last one)

Guitar lessons (last one)

KS1 Nativity 1.30pm

### Wednesday 13th December

No Toddler Group

EYFS Nativity 10.30am

Strings lessons

Y1/Y2 Code Club (4 of 5) 3.15-4.15pm

### Thursday 14th December

Swimming Year 5 (12 of 12)

EYFS Nativity 10.30am

Drumming lessons 2.30-3.30pm

Tea with Santa 3.15-5pm

### Friday 15th December

Christmas Dinner—wear a Christmas Jumper



### Term Dates for 2023-2024

	Opens on	Closes on
Autumn Term 2023	Wed 6 Sept	Fri 27 Oct
Autumn Term 2023	Tues 7 Nov	Thurs 21 Dec
Spring Term 2024	Mon 8 Jan	Fri 9 Feb
Spring Term 2024	Mon 19 Feb	Thurs 28 March
Summer Term 2024	Mon 15 April	Thurs 23 May
Summer Term 2024	Mon 3 June	Tues 23 July

School also closed:  
May Day—Monday 6th May 2024

### Term Dates for 2024-2025

	Opens on	Closes on
Autumn Term 2024	Wed 4 Sept	Thurs 24 Oct
Autumn Term 2024	Mon 4 Nov	Fri 20 Dec
Spring Term 2025	Mon 6 Jan	Thurs 13 Feb
Spring Term 2025	Mon 24 Feb	Fri 4 April
Summer Term 2025	Tues 22 April	Thurs 22 May
Summer Term 2025	Mon 2 June	Tues 22 July

School also closed:  
May Day—Monday 5th May 2025

These term date cards are now available to  
collect at the school office.

## Y6 Residential - 20th to 22nd May 2024

### Manor Adventure, Willersley Castle, Peak District

For the children that are attending the Y6 residential in May 2024, the payment balance has been added to your child's SchoolMoney account. It has been set up so that you can pay as much as you want, when you want, but must be paid in full by 31st March 2024.

Spending money of 3 x £1 coins (in an envelope please) can be handed to the school office any time from now until May.

A meeting will be arranged for April 2024 with detailed information regarding activities, room arrangements and kit lists. You will also be able to ask any questions you may have and discuss, if necessary, any special needs.

### Breakfast Club

Breakfast Club runs from 7.30-8.50am each morning. It costs £6 per session and should be paid IN ADVANCE via SchoolMoney.

### After School Club

After School Club runs from 3.15-5.30pm each evening. It costs £8 per session and, like the Breakfast Club, should be paid IN ADVANCE via SchoolMoney.

Both of these clubs are extremely popular and we are limited to numbers.

IMPORTANT—We do have procedures in place for booking places in both of these clubs. Firstly, please email school by 1.00pm on a Friday for the sessions you would like booking for the following week ([chapelend@sthelens.org.uk](mailto:chapelend@sthelens.org.uk)). The costs for both clubs are shown above. When you book by email you then need to total the cost of your sessions and add this to your child's SchoolMoney account. You can add this in the Club top-up section on the account.

If you need to attend Breakfast Club in an emergency, on a day that you haven't booked, please ring Breakfast Club on that morning and see if there is a place available. Likewise, if you need After School Club and you haven't booked in please ring school and we can see if there is a space.

If you need to cancel a booking on the day please ring school and speak to a member of staff to inform them that you don't need the place on that day. This place can then be offered to another child. If you need to cancel a future booking you can do this by email.

Please be aware that staff have the authority to refuse a booking if the SchoolMoney account is not up to date.

### Change of Meal Arrangements

Please note that meal arrangements can only be changed after each school holiday.

If you would like to change your child's meal arrangements after Christmas, please email school at [chapelend@sthelens.org.uk](mailto:chapelend@sthelens.org.uk) by Wednesday 20th December.

### Fish Friday Payments

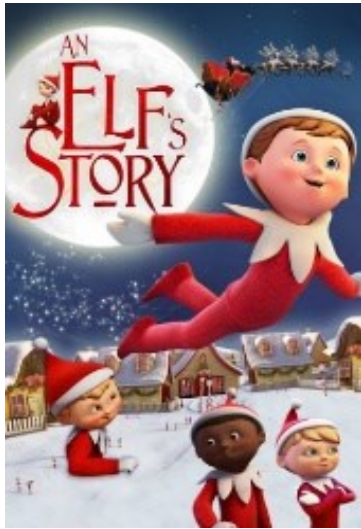
Please remember Fish Friday is paid **in advance of the term.**

Please note Fish Friday for next half term is **£13.00 (5 weeks).**



**Children's Christmas Film Night – Friday 8<sup>th</sup> December 5pm start.**

**St Aidan's Church, Billinge showing:**



**An Elf's Message** is filled with fun, music and the timeless message that Christmas is something we carry in our hearts.

Running Time 26mins

**The Snowman** is the classic story of a child's snowman that comes to life at midnight and the two embark on a magical adventure.

Running Time 26mins



**Come dressed in your PJs, settle down and watch two short Christmas films. Please arrive for 4:45pm to get your drink and goody bag**

**Then we can settle down and watch the films.**

**£3 each child, pay on the door**

**Phone Alison with any enquiries 07837549722**



## YEAR 6 TRANSITION

### FREE ONLINE PARENT / CARER SESSIONS

If your child has an SEN or significant worries and is due to transition to secondary school in September 2024, we would love you to join us on our online sessions to share preparation tips and advice.

By 31<sup>st</sup> October 2023 you will have submitted a secondary school application to name your 3 preferred schools.

We are delighted to offer you some advice and support to be able to effectively plan the next steps of your child's journey.

Many of the strategies will work for most children who require that little bit of additional support.

Sessions will be delivered online through TEAMS directed to parents/carers (not to children); if you can attend all four it would be more beneficial.

For further information please email us on [LASCStransitions@sthelens.gov.uk](mailto:LASCStransitions@sthelens.gov.uk) so we can send you a TEAMS link to the sessions

Session One - The Year Ahead	Friday 1 <sup>st</sup> December 2023 12:30 - 1:30pm	<ul style="list-style-type: none"> <li>Differences between Primary &amp; Secondary</li> <li>Independence &amp; Preparation</li> <li>Travel to school</li> <li>Next Steps</li> </ul>
Session Two - Building Blocks	Friday 2 <sup>nd</sup> February 2024 12:30 - 1:30pm	<ul style="list-style-type: none"> <li>What is a transition?</li> <li>Managing change</li> <li>Developing independence</li> </ul>
Session Three - A Helping Hand	Friday 22 <sup>nd</sup> March 2024 12:30 - 1:30pm	<ul style="list-style-type: none"> <li>Managing worries &amp; nerves</li> <li>Emotions Scales</li> <li>Looking for the positives</li> </ul>
Session Four - The Finish Line is in Sight!	Friday 10 <sup>th</sup> May 2024 12:30 - 1:30pm	<ul style="list-style-type: none"> <li>Being Prepared</li> <li>One Page Profiles</li> <li>Communication</li> <li>Preparation &amp; Practice</li> </ul>



# SAFER & HEALTHIER

## Top Tips to Stay Safe

### Walking in Icy & Snowy Conditions



When walking in ice and snow:

- Keep your knees relaxed.
- Feet pointed slightly outward.
- Take short, slow, shuffling steps.
- Keep your centre of gravity over your feet.
- Walk flat footed and wear shoes with slip-resistant soles and good treads.
- Look ahead and extend your arms out to maintain balance.
- Keep your hands out of your pockets.
- When on steps, always use the handrail for support.
- Watch where you are stepping.
- Take your time – allow any extra time that may be needed in icy conditions.

WORKING TOGETHER  
FOR A BETTER BOROUGH,  
WITH PEOPLE AT THE HEART  
OF EVERYTHING WE DO.



WWW.STHELENS.GOV.UK

Dear Parents/Carers

St Helens Council has a duty under the [School Admissions Code](#) to consult on the admission arrangements of Community & Voluntary Controlled schools and the Co-ordinated Admission Scheme at least once every seven years, even if there have been no changes during that period.

The last full consultation on admission arrangements and co-ordinated schemes took place in December 2016, for the 2018/19 academic year. Last September I contacted all schools, governing bodies and diocesan boards with capacity (SCAP) information, and to ask for any details of any changes to be made to admission arrangements prior to formal consultations taking place. Two primary schools are making changes for 2025/26.

Please find a link below to the proposed admission arrangements and proposed schemes for the 2025/26 academic year...

[Pupil place planning and schools organisation - St Helens Borough Council](#)

Comments or suggestions about the proposed arrangements and schemes can be made to

[schooladmissions@sthelens.gov.uk](mailto:schooladmissions@sthelens.gov.uk) by Friday 19 January 2024.

Thank you

*Craig Hewitt*  
*Headteacher*  
*Chapel End Primary School*

