



# BILLINGE CHAPEL END

— SCHOOL & NURSERY —



WEEKLY NEWSLETTER 3rd March 2023

Website: [www.chapelend.st-helens.sch.uk](http://www.chapelend.st-helens.sch.uk)

Email: [chapelend@sthelens.org.uk](mailto:chapelend@sthelens.org.uk)

## Themed Weeks

At Chapel End Primary School we provide a broad curriculum offer. Part of this offer is for all of our children to learn about events from different religions, traditions, cultures and ways of life from around the globe.

## Week Beginning

06.03.23  
Holi-Hindu

13.03.23  
Mother's Day

20.03.23  
Ramadan

27.03.23  
Holy Week

## Dates for your diary

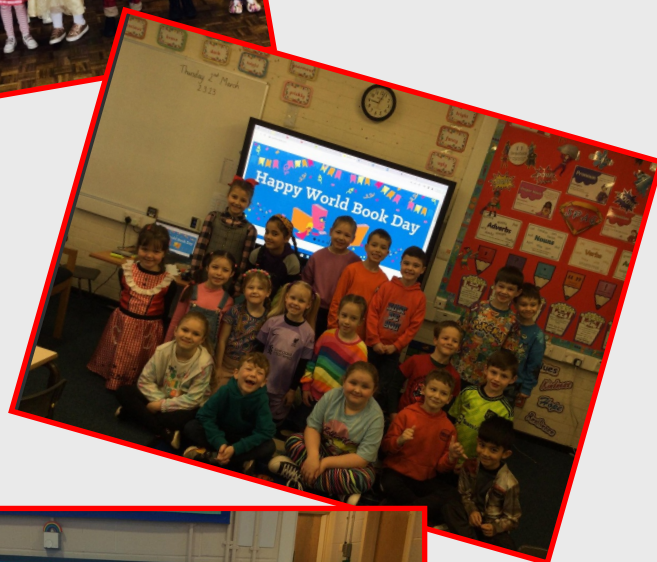
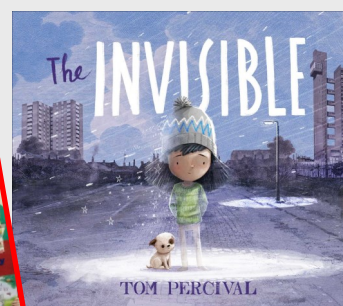
17.03.23  
Red Nose Day

21.03.23  
Parents Evening

22.03.23  
Spring Song

23.03.23  
Parents Evening

## World Book Day



Comic Relief Friday 17th March



Together at Chapel End Primary School this year we are joining the Red Nose Day campaign.

Children can wear non-uniform and have a crazy hair style!

We would ask for a voluntary donation of your choice towards 'Red Nose Day' and this can be paid via SchoolMoney.

Thank you in advance for your support.

Wartime

Spring Song

POP

Rock

As part of our Music Curriculum our children in each year group learn a song from a different genre of music. On Wednesday 22nd March each class will perform their song to families on the junior playground. To make this event come alive we would like the children to dress in a style that represents the genre of music that they are performing.

EYFS—Pop; Y1- Reggae; Y2—Rock; Y3- Soul and Funk ; Y4- Dance; Y5—Country ; Y6- Wartime

Soul + funk

Dance

Reggae

Country

Parents Evening

Tuesday 21st and Thursday 23rd March

Tuesday 21st March—3.30-6.30pm

Parents evenings for Reception—Year 6 are taking place in school in the classrooms.

Thursday 23rd March—12.45-3.15pm

Reception meetings to be held in EYFS meeting room. Years 1 & 2 meetings will be held in the classrooms next door to Year 1 and 2 classrooms. Years 3-6 meetings will be held in the main hall.

Parents can book slots using our T2P Parents Evening system following the link that was sent out on Wednesday.

Nursery meetings will be held all day on Thursday 23rd March. Mrs Montrose will contact families to arrange individualised times. These meetings will be in EYFS meeting room and can be accessed through the white nursery door near the main office.

Anyone wishing to make an appointment to see Mr Hewitt could you please book through the office.

## PTFA Spring Term Events

### Mother's Day Gift Shop

With Mother's Day approaching we have decided to give the children at Chapel End the opportunity to purchase a small gift for the special people in their lives. These gifts will be toiletries-based and will be presented in a gift bag with a tag that the children can write themselves. All gifts will be £2.50. In order to avoid too many children shopping at once and to give the children the opportunity to save their pocket money we will be providing specific shopping days for each class on the following dates:

Y5 and Y6—Monday 13th March

Y3 and Y4—Tuesday 14th March

Foundation Stage, Y1 and Y2—Wednesday 15th March

Mother's Day this year is on Sunday 19th March.

Many thanks in anticipation of your support



### Easter Bingo

On Friday 24th March we will be holding a non-uniform day. The children will be able to attend school in their own clothes in return for a donation of a small Easter Egg or a chocolate bar. These donations will then be used as prizes for Easter Bingo.

Easter Bingo will take place on Monday 27<sup>th</sup> March - 3.30-5.00pm.

Included in the ticket price (£2.00) are bingo games and a small chocolate gift for each child. There will also be a raffle and refreshments available. In order for us to be able to comply with Fire Regulations and also to make sure that we can comfortably seat everybody, everyone attending needs to purchase a ticket. Tickets will go on sale on Monday 6<sup>th</sup> March from the school office. Please try to ensure you have the correct change when purchasing your tickets. Thank you.



### Nursery & Infant Easter Bonnet Parade

It is traditional at Chapel End to hold an 'Easter Bonnet Parade' for all Nursery and Infant children. This will take place on Friday 31st March and we very much hope that all children will participate.

We hope that, with your help, your child will make a simple Easter or Spring hat to bring to school on that day. Small prizes will be given to the 'best' ones in each class. Hopefully the weather will be fine and the children will be able to go home wearing their decorated hat. Please speak with your child's teacher if you require any further information.



### Important -Advanced Information!!

In line with the majority of schools across the borough, we finish early on the final day of each **term** (end of half terms will be normal times). Please note on Friday 31st March school finishes at the following times:

**2.30pm All Children**

This is usually a 2pm finish, however on this occasion Year 6 are attending the residential and will return at approximately 3.30pm. If your child doesn't have a sibling in Year 6 they will finish at 2.30pm. If they have a sibling in Year 6 they can stay until their normal collection time 3pm-3.15pm.

**Please ensure you are at school in plenty of time to pick up your child promptly.**

**NB: The last After School Club of the term will be Thursday 30th March.**



### Gymnastics Competition

Well done to Harmony, Hugo, Alice, Sonny and Megan.

You did us proud!



## King Charles III Coronation

On Friday 5th May Chapel End will be celebrating the King's Coronation with a 'Street Party' for school lunch. The street party will take place outside on the Junior playground weather permitting.

All the children and staff may come to school dressed in red, white and blue.

The lunch will consist of party food: more information to follow.

All children have been invited to have a street party lunch that day.

If your child is on school dinners or Fish Friday they will automatically have a street party lunch as it is on a Friday.

If your child is on packed lunches and would like a street party lunch then please email the school office [chapelend@sthelens.org.uk](mailto:chapelend@sthelens.org.uk).

### Reception, Y1 or Y2

Children in these year groups are entitled to a Universal Free School Meal. No payment needed.

### Nursery, Y3-6 - Current packed lunches

If your child is having a street party lunch, please pay £2.50 via SchoolMoney .

### Nursery, Y3-6 - Current school meals

Please pay your dinner money as normal and your child will be provided with street party lunch on the day.

### Nursery—15 Hours

All children attending Nursery for 15 hours are invited to stay for the street party lunch. Please pay £2.50 via SchoolMoney.





### Y6 Booster Classes

In preparation for the Year 6 children's SATS in May, Booster classes are on Wednesdays 3.15-4.30pm and will cover Maths and English. Children are invited to bring an additional snack and drink to have at 3.15pm before their class begins.

#### The sessions will be on the following dates:

Wednesday 8th March

Wednesday 15th March

#### After the Easter holidays, the sessions will be on the following dates:

Wednesday 19th April

Wednesday 26th April

Wednesday 3rd May

### Bank Holiday - Monday 8th May

A reminder that school will be closed on Monday 8th May due to the King's Coronation.

Our school Value of this half term is **LOVE**



### Scholastic Book Club

Our new Scholastic Book Club is up and running!

Last week your child brought home the latest Scholastic Book Club leaflet. Go to <https://schools.scholastic.co.uk/billinge-chapel-end/digital-book-club> to browse the latest books. Any orders will then be delivered to school. Please place your order by Friday 17th March. Thank you.





### Pupil of the Week

### Wonder Wall

<b>Nursery</b>	<b>Edith Raven</b>	<b>Molly Wolfenden</b>
<b>Reception</b>	<b>Arthur Kavanagh</b>	<b>Sophia-Rose Comiskey</b>
<b>Y1</b>	<b>Alice Jackman</b>	<b>Lilly Haworth</b>
<b>Y2</b>	<b>Emili Bazi</b>	<b>Amias Aslam-Gallagher</b>
<b>Y3</b>	<b>Daisy Chisnall</b>	<b>Megan Pilling</b>
<b>Y4</b>	<b>Ayva Lowery</b>	<b>Miles Roby</b>
<b>Y5</b>	<b>Joe Forster</b>	<b>William Crimes</b>
<b>Y6</b>	<b>Elle Thomson</b>	<b>Faye Jackman</b>

### Class Attendance for w/c 20<sup>th</sup> February

<u>Class</u>	<u>% attendance for week</u>
Nursery	94.7
Reception	93.3
Year One	99.5
Year Two	95.5
Year Three	89.1
Year Four	95.5
Year Five	95.5
Year Six	100.0

The national target for attendance in Primary schools is 96%

Well done Year 6 on your perfect percentage and Year 1 near perfect percentage last week and by rounding up Years 2, 4+5 have hit the target.

By continuing to work together I am sure that we can get all classes meeting 96%.

Thank you for your continued support.

### **Instrumental Tuition at Chapel End Primary School**

**We are delighted to let you know that The Schools Music Service will be returning to provide instrumental music tuition.**

**We currently offer classes on cornet, guitar, trumpet and trombone in school, in small group half hour sessions, during the school day.**

**It is our belief that music greatly enriches the life of a child, both academically and socially.**

**If you would like more information about classes here is a link to their website where you can see how everything works -**

**[www.schoolsmusicservice.co.uk](http://www.schoolsmusicservice.co.uk)**

**If you know what instrument your child would like to learn, or you have learned with them before, you can register for classes on their website and they will sort everything out for you.**

**Please watch their short video for more information.**

**Also, if your child has had music tuition with them in the previous academic year, please ensure that you have made a new application for this year's tuition to put them back onto the teacher's pupil list.**



### **Fish Friday Payments**

Please remember Fish Friday is paid **in advance of the term.** Fish Friday for this half term is **£15.00 (6 weeks).**

### **E Safety**

**I would like to direct all parents and carers to the E Safety section of our school website. Information about how to add parental controls to your child's digital devices along with many more useful tips can be found on there.**

### **Early Bird Club**

**Early Bird Club runs from 7.30-8.50am each morning. It costs £4 per session and should be paid IN ADVANCE via SchoolMoney.**

### **Buzz Club**

**Buzz Club runs from 3.15-5.30pm each evening. It costs £6 per session and, like the Early Bird Club, should be paid IN ADVANCE via SchoolMoney.**

**Please note that these clubs are extremely popular and we are limited to numbers, so bookings should be made by 1pm the Friday before the week your child is attending. by emailing your requirements to the school office [chapelend@sthelens.org.uk](mailto:chapelend@sthelens.org.uk)**



## School Diary — Next Week in School

### Monday 6th March

Year 1 & 2 Multiskills 3.15-4.15pm (3 of 5)

### Tuesday 7th March

Year 1 & 2 Steve's football 3.15-4.20pm. (3 of 6)

Dance lessons 3.15-4.30pm

Year 1 & 2 Board Games Club 3.15-4pm (3 of 6)

Year 5 & 6 Football 3.15-4.15pm

Year 3-6 Tag Rugby 3.15-4.15pm (3 of 5)

### Wednesday 8th March

Toddler Group 9.30-11am

String Lessons

Brass Lessons

Y3 Curling tournament

Year 6 Booster lessons 3.15-4.30pm.

### Thursday 9th March

Years 3-6 Steve's Tennis 3.15-4.20pm (3 of 6)

### Friday 10th March

Year 5 Swimming 1-2pm (3 of 6)

Code Club 3.15-4.00pm (3 of 5)

### Term Dates for 2022-2023

	Opens on	Closes on
Autumn Term 2022	Mon 5 Sept	Thurs 20 Oct
Autumn Term 2022	Mon 31 Oct	Wed 21 Dec
Spring Term 2023	Wed 4 Jan	Thurs 9 Feb
Spring Term 2023	Mon 20 Feb	Fri 31 March
Summer Term 2023	Mon 17 April	Thurs 25 May
Summer Term 2023	Mon 5 June	Wed 19 July

School also closed:  
May Day—Monday 1st May 2023

### Term Dates for 2023-2024

	Opens on	Closes on
Autumn Term 2023	Wed 6 Sept	Fri 27 Oct
Autumn Term 2023	Tues 7 Nov	Thurs 21 Dec
Spring Term 2024	Mon 8 Jan	Fri 9 Feb
Spring Term 2024	Mon 19 Feb	Thurs 28 March
Summer Term 2024	Mon 15 April	Thurs 23 May
Summer Term 2024	Mon 3 June	Tues 23 July

School also closed:  
May Day—Monday 6th May 2024

## Dates for the Diary

### March

Friday 17<sup>th</sup> March - Red Nose Day

Tuesday 21<sup>st</sup> March & Thursday 23<sup>rd</sup> March - Parents Evenings

Wednesday 22<sup>nd</sup> March - Spring Song

Friday 24<sup>th</sup> March - Non-uniform Day for chocolate donations

Monday 27<sup>th</sup> March - Easter Bingo

Tuesday 28<sup>th</sup> March - Year 3, end of Year school trip

Wednesday 29-Friday 31<sup>st</sup> March—Year 6 residential

Friday 31<sup>st</sup> March - Nursery & Infant Easter Bonnet Parade

Friday 31<sup>st</sup> March - last day of term - 2.30pm finish

### April

Thursday 20<sup>th</sup> April - Year 5, end of Year school trip

Thursday 27<sup>th</sup> April - Year 4, end of Year school trip

### May

Friday 5<sup>th</sup> May - King's Coronation celebrations

Monday 8<sup>th</sup> May - Bank Holiday

Wednesday 10<sup>th</sup> May - Year 1, end of Year school trip

Tuesday 23<sup>rd</sup> May- EYFS & KS1 Sports Day

Thursday 25<sup>th</sup> May- KS2 Sports Day

### June

Monday 12<sup>th</sup> - Friday 16<sup>th</sup> June - Year 6 Bikeability

Monday 19<sup>th</sup> June - Year 5 trip to Edge Hill University

Wednesday 21<sup>st</sup> June - Year 2, end of Year school trip

### July

Wednesday 5<sup>th</sup> July - Year 6 Production

Friday 7<sup>th</sup> July - 50<sup>th</sup> Anniversary and Summer Fair

### School Uniform Shop

We will be opening our onsite uniform shop in our Breakfast/After School Club room from Monday 6th March. Parents and carers will be able to purchase items of uniform for £2 each or 3 for £5. All polo shirts are £1 each. Any items purchased can be paid in cash or on School Money, Thank you.



### School Uniform

Summer uniform may be worn after Easter and a reminder of the uniform is given below.

#### Boys Uniform

Red round-neck school jumper displaying the Chapel End Primary School emblem.  
White polo T-shirt  
Grey trousers/short-trousers in summer  
Plain grey socks  
Black school shoes

#### Girls Uniform

Red round-neck school jumper or red school cardigan displaying the Chapel End Primary School emblem.  
White polo T-shirt  
Plain grey pinafore, grey skirt (appropriate length) or grey trousers  
Red gingham dress in summer (red and white checks)  
Red gingham all-in-one Years 3-6  
Grey tights  
White socks (recommended for Summer) Grey socks (recommended for Winter)  
Black Shoes

#### Footwear

We want our children's feet to be healthy and flourish, therefore all pupils must wear sensible, well-fitting shoes with an appropriate low heel. Boots are not allowed in the classroom, therefore on bad weather days if your child wears boots to school they must remember to bring their school shoes to change into. Trainers are not allowed to be worn in school with the exception of times when children are participating in planned physical activities.

#### Nursery

Children of Nursery age are permitted to wear black or grey jogging trousers to support gross motor skill activities and toilet training.

### IMPORTANT - PE KIT NOTICE

If you are planning on ordering a new PE kit, please be aware that, due to a change in supplier, there is now a new size guide.

We now have sample sizes of the PE kit in the office. To enable you to purchase the correct size for your child please see or try on the size from the office first. Thank You.

## School Swimming Lessons

We are very pleased to be able to offer all children in Years 5 the opportunity to visit the swimming baths once a week over half a term period to participate in swimming lessons. Lessons will take place on a Friday afternoon between 1:00pm and 2:00pm.

The dates are as follows:

### Year 5

24th February 23

3rd March 23

10th March 23

17th March 23

24th March 23

31st March 23

The swimming lessons will take place at Queens Park Health & Fitness Centre and transport will be arranged by school.

Below are the swimwear requirements set by the local authority.

*'Pupils should be encouraged to wear swimming caps during the lessons or hair must be tied back. Correct swimwear must be worn at all times.'*

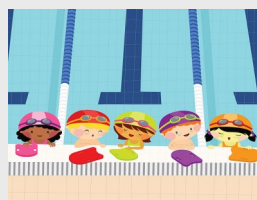
*Girls must wear a one-piece swimsuit (no two piece at all). No Wet Suits.*

*Boys must wear swimming trunks or shorts of no longer than mid thigh length with no pockets (no Bermudas or long shorts are acceptable as these can become dangerous when the pockets become full of water). No Wet Suits.*

*No Jewellery to be worn including all types of earrings.*

*Any child attending the pool without the correct equipment will not be allowed to swim.'*

**Any armbands/floats etc will be provided.**



## 50<sup>th</sup> Anniversary T-Shirts

As you will know from last week's newsletter, we are having special T-shirts made to commemorate our 50<sup>th</sup> anniversary in July.

They are designed so that they represent the anniversary but can also be used as your child's PE T-shirt next year. Should you wish to purchase a T-shirt please find the information below.

Staff, Governors, families and ex-pupils are also welcome to purchase a celebratory T-shirt.

### Child sizes (£7):

Size	2-3	3-4	5-6	7-8	9-11	12-13	14-15
Age:	2-3	3-4	5-6	7-8	9-11	12-13	14-15
Height (cm):	98	104	116	128	140	152	164
Chest (to fit):	20/22	22/24	26/28	30	32	34	36

### Adult sizes (£8):

Size	S	M	L	XL	XXL	3XL	4XL
Size:	S	M	L	XL	XXL	3XL	4XL
Chest (to fit):	35/37	38/40	41/43	44/46	47/49	50/52	53/55

---

## 50<sup>th</sup> ANNIVERSARY T-SHIRT ORDER FORM

Child's Name: ..... Class .....

Parents Signature: .....

<u>Item</u>	<u>Price</u>	<u>Quantity</u>	<u>Total £</u>
Child size 2-3	£7		
Child size 3-4	£7		
Child size 5-6	£7		
Child size 7-8	£7		
Child size 9-11	£7		
Child size 12-13	£7		
Child size 14-15	£7		

<u>Item</u>	<u>Price</u>	<u>Quantity</u>	<u>Total £</u>
Adult size S	£8		
Adult size M	£8		
Adult size L	£8		
Adult size XL	£8		
Adult size XXL	£8		
Adult size 3XL	£8		
Adult size 4XL	£8		

Total to pay £\_\_\_\_\_

Please complete form and return to school office. The cost of your order will then be added to your child's SchoolMoney account. If you are ordering more than one T-shirt the order will be added to your oldest child's SchoolMoney account.

**PLEASE NOTE: FINAL DATE FOR PAYING FOR T-SHIRTS WILL BE FRIDAY 19<sup>TH</sup> MAY 2023.**

Note: Always read and adhere to manufacturer's washing/drying instructions found on labels.